

FOR HS200 Series Mortice Mounted Locks

Europrofile Cylinders and Thumbturns

External Key/Internal Key (for use with or without cylinder guard)

Cylinder Make	Overall Length	Door Thickness	Overall Length	Door Thickness	Overall Length	Door Thickness	Overall Length	Door Thickness
Union	64mm	48-54mm	74mm	55-64mm	80mm	65-74mm	90mm	75-84mm
Order Code		8-50101		8-50102		8-50103		8-50104
ASSA Twin Combi	61mm	52-60mm	71mm	61-70mm	81mm	71-81mm		
Order Code		8-50201		8-50202		8-50203		
ABLOY Protec	60mm	48-56mm	74mm	57-65mm	84mm	66-75mm	94mm	76-85mm
Order Code		8-50301		8-50302		8-50303		8-50304
Yale	62mm	49-60mm	70mm	61-68mm	80mm	69-78mm	90mm	79-86mm
Order Code		8-50401		8-50402		8-50403		8-50404
Kaba Expert	60mm	48-58mm	70mm	64-69mm	80mm	70-80mm		
Order Code		8-50501		8-50502		8-50503		
Kaba 20 Profile	65mm	54-65mm	75mm	66-75mm	85mm	76-85mm		
Order Code		8-50601		8-50602		8-50603		

Key/Thumbturn (for use with or without cylinder guard)

Cylinder Make	Overall Length	Door Thickness	Overall Length	Door Thickness	Overall Length	Door Thickness	Overall Length	Door Thickness
Union			69mm	48-59mm	78mm	60-69mm		
Order Code				8-50112		8-50113		
ASSA Twin Combi	61mm	52-62mm	71mm	63-71mm	81mm	72-81mm		
Order Code		8-50211		8-50212		8-50213		
ABLOY Protec	60mm	48-56mm	70mm	57-65mm	84mm	66-75mm	94mm	76-85mm
Order Code		8-50311		8-50312		8-50313		8-50314
Yale					80mm	60-70mm	90mm	71-80mm
Order Code						8-50413		8-50414
Kaba Expert	60mm	48-58mm	70mm	64-69mm	80mm	70-80mm		
Order Code		8-50511		8-50512		8-50513		
Kaba 20 Profile	65mm	54-65mm	75mm	66-75mm	85mm	76-85mm		
Order Code		8-50611		8-50612		8-50613		

External Key only (for use with or without cylinder guard)

Cylinder Make	Overall Length	Door Thickness	Overall Length	Door Thickness	Overall Length	Door Thickness	Overall Length	Door Thickness
Union	40mm	49-59mm	45mm	60-69mm	49mm	70-77mm	53mm	78-84mm
Order Code		8-50121		8-50122		8-50123		8-50124
ASSA Twin Combi	40mm	51-63mm	45mm	64-71mm	50mm	72-83mm		
Order Code		8-50221		8-50222		8-50223		
ABLOY Protec	30mm	49-57mm	37mm	58-67mm	42mm	68-77mm		
Order Code		8-50321		8-50322		8-50323		
Yale	40mm	66-75mm						
Order Code		8-50421						
Kaba Expert	30mm	49-58mm	35mm	59-64mm	40mm	65-72mm	45mm	73-82mm
Order Code		8-50521		8-50522		8-50523		8-50524
Kaba 20 Profile	43.5mm	54-65mm	48.5mm	66-75mm	53.5mm	76-85mm		
Order Code		8-50621		8-50622		8-50623		

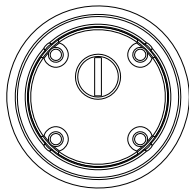
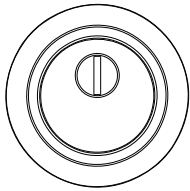
Note: All cylinders identified in blue text are stock items. All others are special order items.
 Union and Yale Cylinder Thumbturns highlighted in red cannot be used with L9020-100.
 For inside thumbturn only (with or without break-dome) please see price list.

Cylinder Guards

Note: Do not order separately if cylinder guard already forms part of the lock configuration.

External view

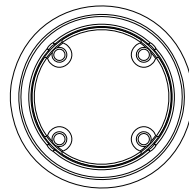
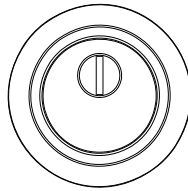
Internal view



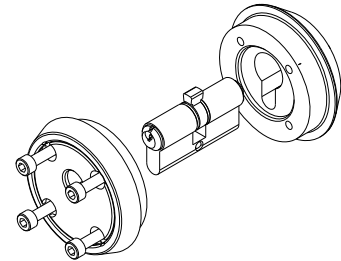
L9020-100
Mortice Cylinder Guard

External view

Internal view

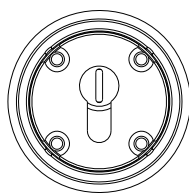
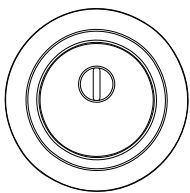


L9020-200
Cylinder Guard (Outside only)

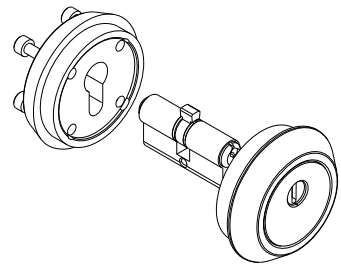


External view

Internal view



L9020-300
Thumbturn Cylinder Guard



Europrofile Escutcheons

L9020-400-S-6
6mm Thick Bolt-Through Europrofile Escutcheon

L9020-400-S-8
8mm Thick Bolt-Through Europrofile Escutcheon

Fixing Packs

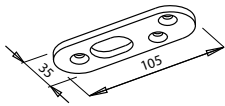
Description	Order Code
Wood Screw Pack	L9031-903
Machine Screw Pack	L9031-904

Tall Door Keeps

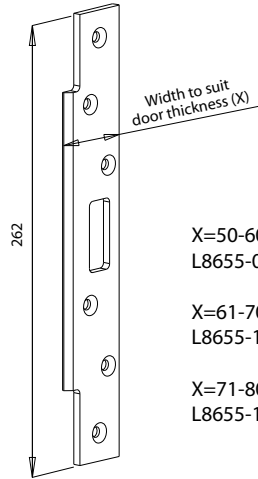
Description	Order Code
0.5m Rod Extension	L8655-921
1.0m Rod Extension	L8655-922

FOR HS200 Series Mortice Mounted Locks

Outward/Inward Opening Timber/Steel Frame Keeps



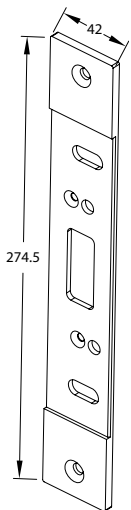
L8655-038
Top Keep Plate



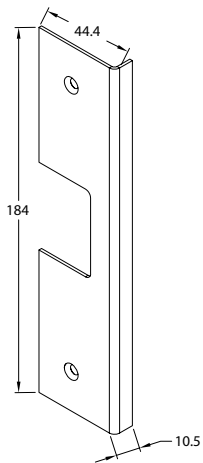
X=50-60mm
L8655-052-F

X=61-70mm
L8655-152-F

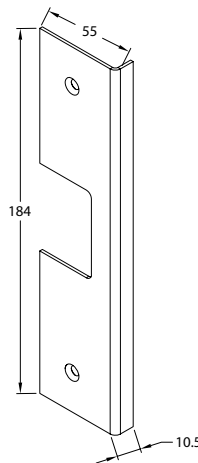
X=71-80mm
L8655-153-F



L9010-010
Mortise Adjustable
Strike Base Plate

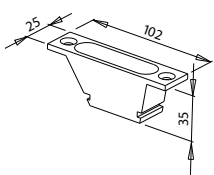


L9010-011
Mortise Adjustable
Strike Plate (48-68mm door)

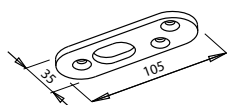


L9010-012
Mortise Adjustable
Strike Plate (68-90mm door)

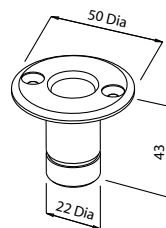
Floor Keeps



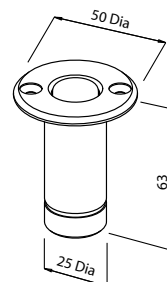
L8655-094 Easy Clean
Floor Keep



L8655-038 Floor
Keep Plate



L9010-001 Floor Keep



L9010-903 Floor Keep
(Sprung)